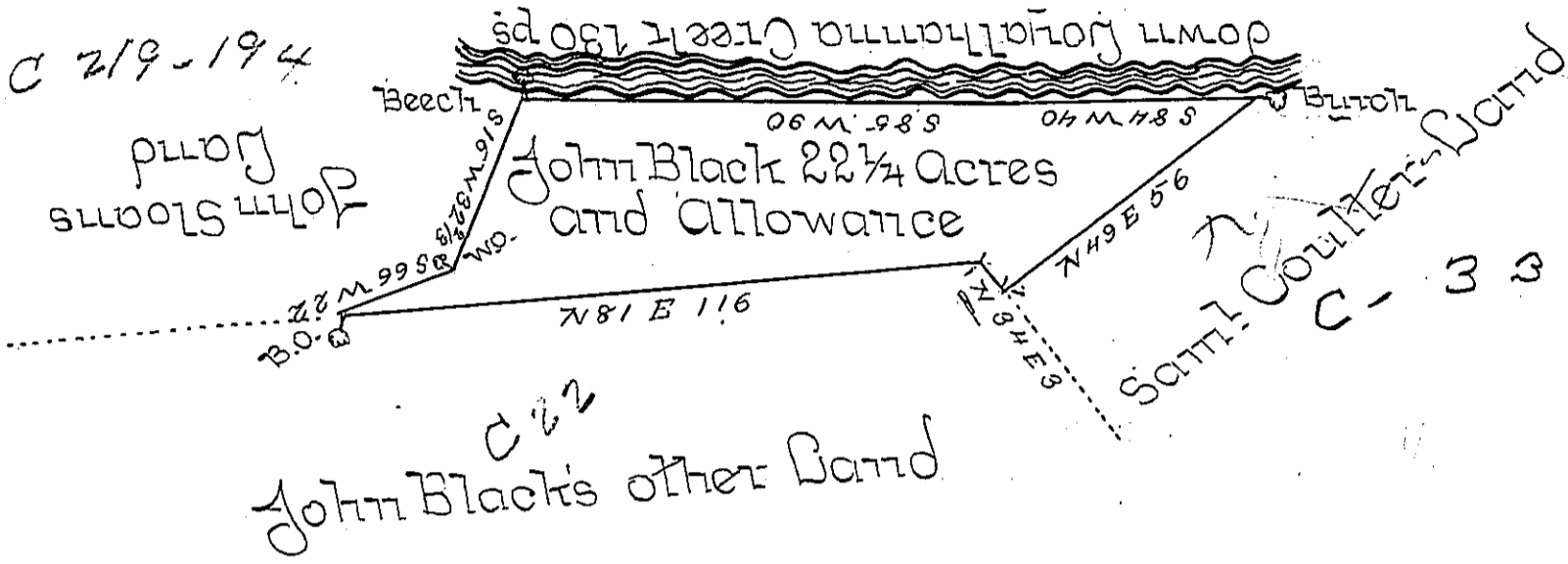


George Leasures Land



In pursuance of a Warrant dated Nov: 10th 1800
 there was surveyed for John Black Minister of
 the Gospel the above described Tract of Land con-
 taining twenty two Acres and one Quarter of an
 Acre with an Allowance proportioned to six Per Cent
 Situate in Unity Township in the County of West-
 moreland surveyed Apr: 6th 1801.

To Samuel Cochran Esquire }
 Survey Genl of Penna } John Moore D.S.

IN TESTIMONY that the above is a copy of the original remaining on file in the
 Department of Internal Affairs of Pennsylvania, made con-
 formably to an Act of Assembly approved the 16th day of
 February, 1833, I have hereunto set my Hand and caused
 the Seal of said Department to be affixed at Harrisburg, this
second day of November 1897.

James W. Patton
 Secretary of Internal Affairs.